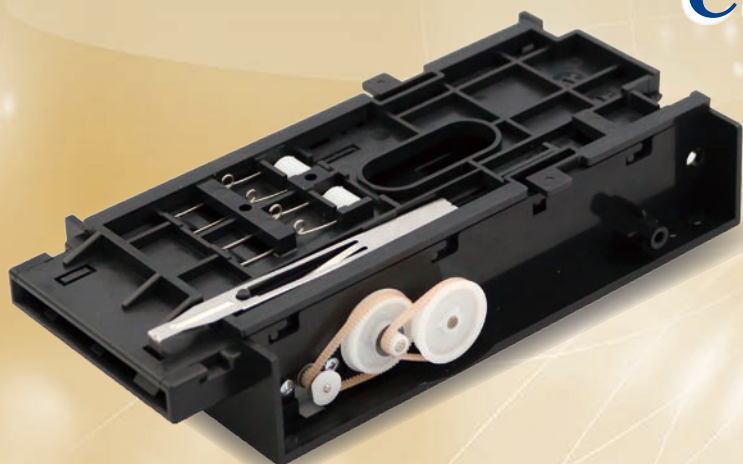


Low-cost and Thin card compatible Card Reader Writer



Product image
CR-17RWII-S (With shutter)

- Low cost
- High reliability and durability
- Thin and Compact design
- DC motor drive
- Card transfer control
(Control from host)
- With shutter : Prevention of erroneous
insertion (Option : S type)

► Applications

- Amusement machine
- Batting cages
- Parking lot
- Entry and exit management system
- Copy machine
- Laundromat

Type	CR-17RW II	CR-17RW II-S
Size	77(W)× 160(D)× 30.5(H) mm	
Compatible card size	53.9+0.13/-0.07mm (W) × 85.6±0.2mm(L) Thickness : 0.18 ~ 0.29mm	
Recording method	Frequency modulation method (F2F)	
Coercivity	219 [kA/m] (2750 [Oe] ±10%)	
Recording density	210 BPI±20%	
Recording capacity	Maximum 50 byte (1 byte : 8 bit)	
Card transfer speed	20.5±1 cm / sec (when shipped from us)	
Interface	CMOS / TTL	
Power supply	12V power : DC12V± 5 % Rated value : 1.0 A or more, 1.5A or less 5V power : DC5V± 5 % Rated value : 0.2A or more, 0.7A or less	

● Specification or appearance of products in leaflet is subject to change without notice.

For inquiries, please contact the following telephone or e-mail right now.

● Manufacturer

● International Sales Department

S.M.C.Group

SANWA NEWTEC CO.,LTD.

ISO9001 acquired in Technical development center and Kunitomi plant.
ISO14001 acquired in Technical development center and Kunitomi plant.



RITA CO., LTD.

(Address) 1-11 Shode, Kiyotake-cho, Miyazaki City,
Miyazaki 889-1603, Japan
Tel : +81- 985-85-1234

(E-mail) t_fukada@sanwa-newtec.co.jp

(URL) <http://web.sanwa-newtec.co.jp/>